



**Digital Diversity:
Crafting Inclusive AI Narratives**

Pr. Nr: 2025-1-DE02-KA210-VET-000354956

Personalized Feedback Navigator User Guide



Co-funded by
the European Union

Personalized Feedback Navigator User Guide

Digital Diversity: Crafting Inclusive AI Narratives
(D2CIN)

Project Number: 2025-1-DE02-KA210-VET-000354956



Funded by the European Union. Views and opinions expressed are however those of the author(s) only and do not necessarily reflect those of the European Union or the European Education and Culture Executive Agency (EACEA).
Neither the European Union nor EACEA can be held responsible for them.

Document Name	Personalized Feedback Navigator User Guide
Project Activity	Activity 1: Personalized Feedback Navigator
Revision Type	Final
Revision Date	30.01.2026
Authors	Mimic Productions (Germany), Budakov Films (Bulgaria)

Declaration on copyright:



This document is protected through the Creative Commons

Attribution-Non-Commercial-Share-Alike 4.0 International License. You are free to:

- Share — copy and redistribute the material in any medium or format
- Adapt — remix, transform, and build upon the material under the following terms:
- Attribution — you must give appropriate credit, provide a link to the license, and indicate if changes are made. You may do so in any reasonable manner, but not in any way that suggests the licensor endorses you or your use.
- Non-commercial — You may not use the material for commercial purposes.
- Share Alike — If you remix, transform, or build upon the material, you must distribute your contributions under the same license as the original.

Any unauthorized use or reproduction of the contents of this training module will be considered a violation of copyright law and subject to legal action.

1. Executive Summary

The Personalized Feedback Navigator is an interactive AI-based assistant designed to support learners within the D2CIN training framework. It enables users to engage with training content through a conversational interface powered by an avatar and conversational AI technology.

The system allows learners to ask questions, receive contextual guidance and interact with educational materials in a more dynamic and engaging way. By combining conversational AI, digital avatars, and interactive interface elements, the Navigator enhances accessibility and personalization within vocational education and training environments.

This document provides a user guide explaining how to access and interact with the Personalized Feedback Navigator, including step-by-step instructions, configuration options, and key features.

2. Introduction

Digital learning environments increasingly rely on interactive technologies to support learners with personalized feedback and guidance. Within the D2CIN project, the Personalized Feedback Navigator has been developed as an AI-driven assistant that allows learners to interact with course materials through a conversational interface.

The Navigator uses a digital avatar and conversational AI system to provide contextual responses to user questions, helping learners better understand training content and explore topics in a flexible way.

The tool is designed to:

- Improve learner engagement
- Provide personalized learning support
- Enable conversational access to training materials
- Create a more inclusive and interactive educational experience

This deliverable explains how users can launch, configure, and interact with the system.

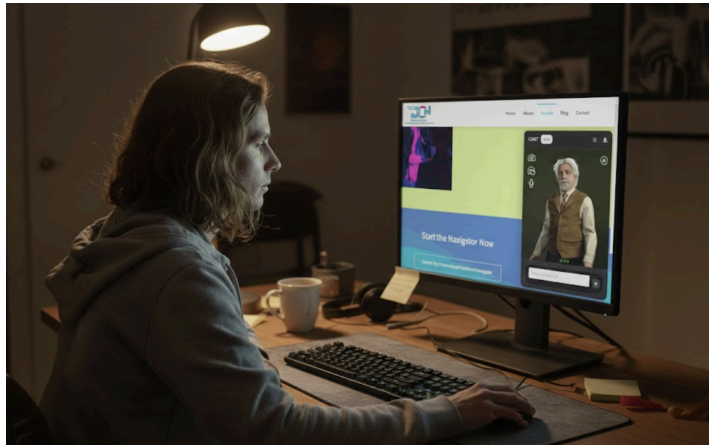
3. Purpose of the Personalized Feedback Navigator

The Personalized Feedback Navigator serves as an interactive support tool within the D2CIN learning ecosystem.

Its main objectives are to:

- Provide personalized explanations related to training content
- Enable conversational learning experiences
- Support learners with instant feedback and guidance

- Increase accessibility through multiple interaction modes (text, voice)
- Improve engagement through a visual avatar interface



The Navigator complements the learning materials by acting as a digital assistant that learners can consult at any time during the training process.

4. System Overview

The Navigator operates through a web-based interface embedded within the training platform.

The system consists of three main components:

- **Conversational AI Engine**

Processes user questions and generates responses based on the training material.

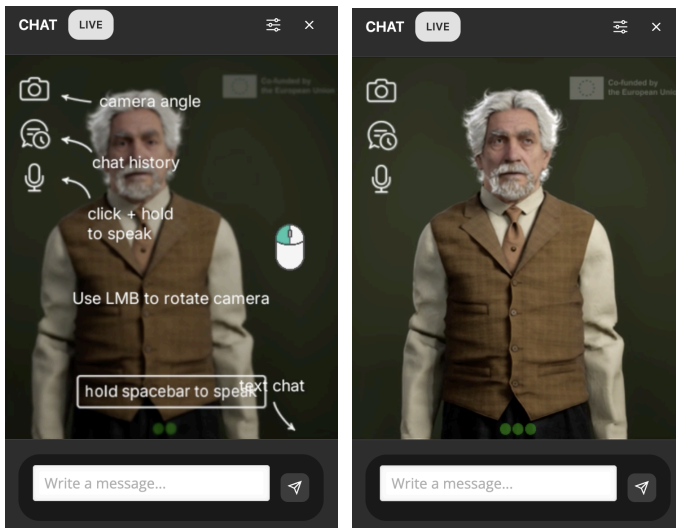
- **Digital Avatar Interface**

Displays the conversational assistant as a visual character that communicates with users.

- **Interactive Chat Widget**

Provides the communication interface where users can type messages, speak, or adjust settings.

The Navigator is designed to run within standard web browsers without requiring additional software installation.



5. Step-by-Step Guide to Using the Navigator

Step 1 – Open the Navigator

To begin using the Personalized Feedback Navigator, users must first launch the interface from the learning platform.

Instructions

1. Locate the button labeled **“Launch My Personalized Feedback Navigator.”**
2. Click the button to activate the Navigator.

Once selected, the system prepares the conversational environment and loads the AI avatar interface.

This process typically takes only a few seconds depending on browser performance and internet connectivity.

Step 2 – Launch and Wait for Initialization

After launching the Navigator, a circular avatar widget appears on the screen.

Instructions

1. Look for the circular avatar widget in the bottom-right corner of the page.
2. Click the widget to open the interaction window.
3. Wait approximately 30–60 seconds while the system loads.

During this time, the platform initializes the AI engine and prepares the avatar for interaction. The message “**Initializing AI...**” may appear briefly while the system connects to the conversational model.

Step 3 – Grant Browser Permissions

To enable full interaction capabilities, the browser may request permission to use the microphone or camera.

Instructions

1. When prompted, allow access to the microphone to enable voice interaction.
2. Camera access may also be requested for future visual interaction features.
3. If permissions are denied, the Navigator will continue functioning in text-only mode.

Providing permissions allows users to speak directly with the avatar, creating a more natural conversational experience.

Step 4 – Configure Chat Window Settings

Users can personalize their interaction environment through the Navigator’s settings panel.

Available Options

Users can adjust:

- **Language settings** – English, German, or Bulgarian
- **Font size** – Normal, Large, or Extra Large

These settings ensure accessibility and usability for different learners and reading preferences.

To change settings:

1. Click the settings icon in the chat interface.
2. Select the preferred language and text size.
3. Changes apply instantly.

Step 5 – Choose How to Interact

The Navigator supports multiple interaction modes to accommodate different user preferences.

Interaction options include:

Camera controls

Users can adjust the viewing angle of the avatar to improve visual interaction.

Chat history controls

Users can open or hide previous conversation messages.

Voice interaction

Press and hold the microphone button to speak directly to the avatar.

These features provide flexibility for both quick questions and extended learning discussions.

Step 6 – Ask Your Question

Users can now begin interacting with the AI Navigator.

Instructions

1. Type a message into the text field labeled **“Write a message...”**
2. Press **Send** to submit the question.

Alternatively, users can use the microphone button to ask a question verbally.

The Navigator will analyze the input and generate a contextual response related to the learning materials and training content.

Step 7 – Trigger Avatar Actions

The avatar interface also supports visual actions and gestures.

To activate these features:

1. Open the **Actions Panel** on the right side of the widget.
2. Select an available gesture.

These actions enhance engagement and create a more interactive learning experience.

Step 8 – Review the Response and Continue

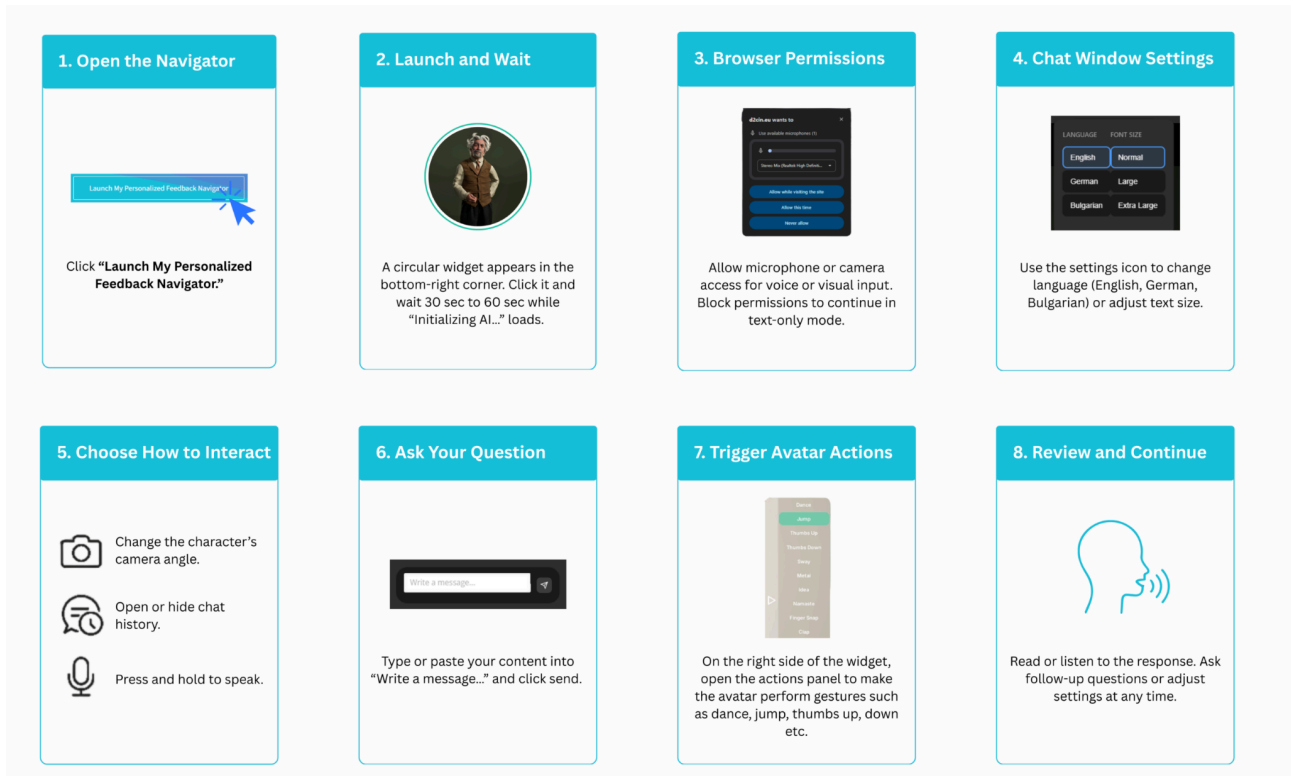
After submitting a question, the avatar will respond either through text or voice.

Users can:

- **Read the response in the chat window**
- **Listen to the spoken response** (if voice is enabled)
- **Ask follow-up questions** to explore the topic further
- **Adjust settings or interaction mode at any time**

The Navigator is designed to support **continuous dialogue**, allowing learners to explore topics in depth and receive personalized feedback throughout their learning journey.

An overview of all steps are provided in the graph below:



6. Accessibility and User Support

The Personalized Feedback Navigator has been designed to support inclusive learning environments.

Key accessibility features include:

- Adjustable font sizes
- Multilingual support
- Voice or text interaction modes
- Clear visual interface with intuitive controls

If technical issues occur, users should ensure:

- A stable internet connection
- A supported web browser (Chrome, Edge, or Firefox recommended)
- Microphone permissions are enabled if voice interaction is required

7. Technical Requirements

To ensure proper functionality, users should meet the following requirements.

Recommended environment:

Web Browser

- Google Chrome
- Microsoft Edge
- Mozilla Firefox

Hardware

- Microphone (optional for voice interaction)
- Camera (optional)

Internet Connection

A stable internet connection is required for the conversational AI system to function correctly.

8. Troubleshooting

If the Navigator does not function as expected, users should check the following:

- Ensure the browser is up to date
- Refresh the page and relaunch the Navigator
- Confirm that microphone permissions are enabled if using voice interaction
- Check internet connectivity

If issues persist, contact the project administrator.

9. Conclusion

The Personalized Feedback Navigator provides learners with an interactive AI assistant that enhances the D2CIN learning experience. Through conversational interaction, users can receive personalized explanations, ask questions, and explore educational materials in a more engaging way.

By combining conversational AI, digital avatars, and an intuitive interface, the Navigator contributes to a more inclusive and dynamic learning environment within vocational education and training contexts.